

# NEXGO EF60

Version 1.4 Issued April 2025

[NEXGOGLOBAL.COM](https://nexusglobal.com)

© 2025 NEXGO | The information contained in this document is subject to change without notice. All pictures shown are for illustration purpose only, actual product and software may vary. NEXGO and the NEXGO logo are either trademarks or registered trademarks of NEXGO in the China and/or other countries. All other trademarks or brand names are the properties of their respective holders.



# EF60

Pioneering fully-integrated  
Smart mini ECR





The EF60 is a high-performance smart mini ECR with a unique and innovative product architecture. The EF60 offers a dual screen, powered by the latest quad-core processor, running Android 11, and equipped with 4GB RAM + 64GB ROM memory. It can adapt to various retail environments, whether at a traditional checkout counter or in a self-service setting.

## Performance

Android 11.0  
Quad- Core Processor

## Flexible and Versatile

Designed for  
Seamless Interactions

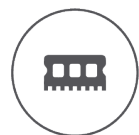
## Elegant

Modern  
Stylish and Simple

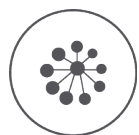


# Powerful Performance

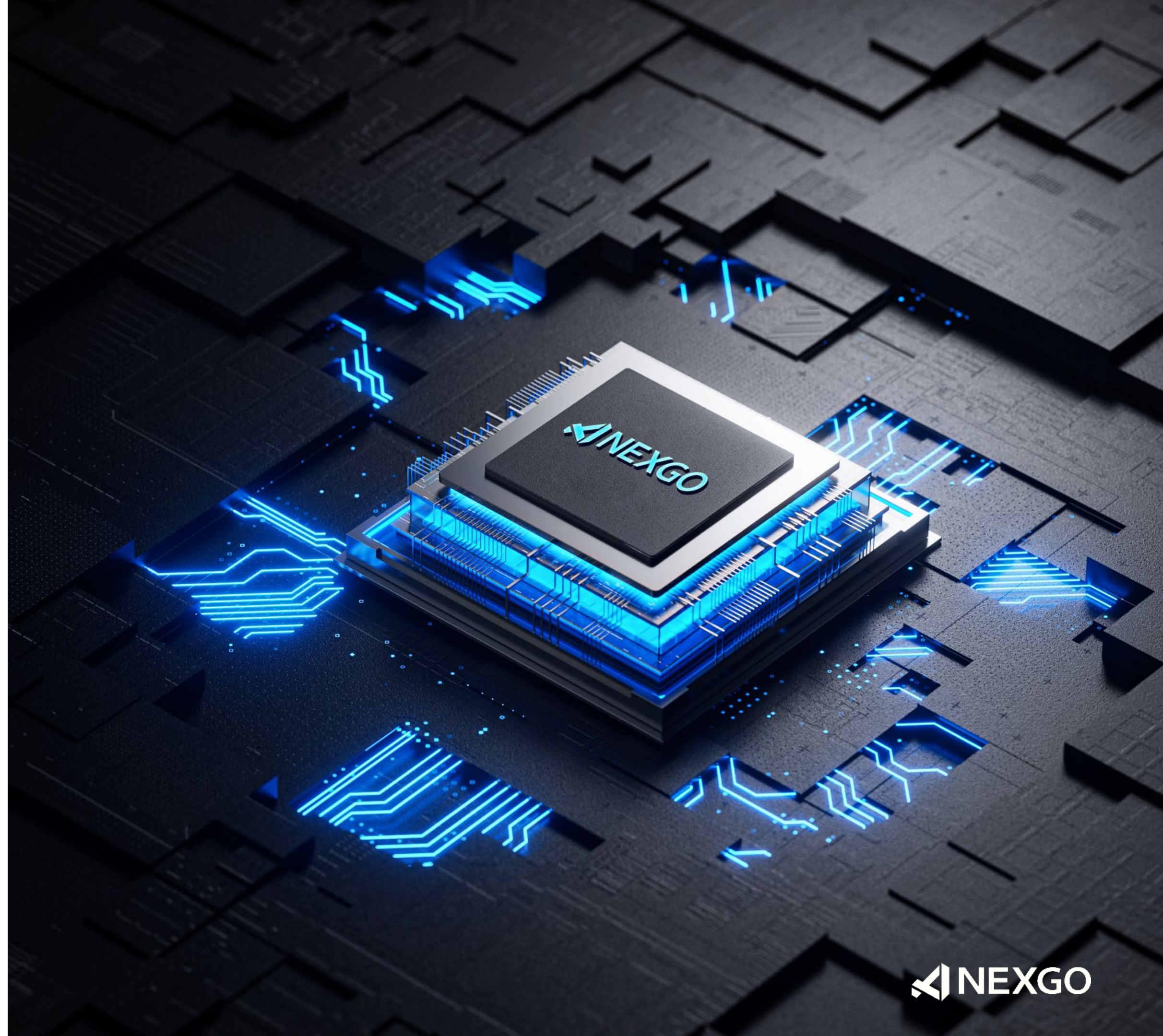
Equipped with an Quad-core high performance processor and 4G RAM+64G ROM memory. EF60 delivers smooth operations and supports barcode reading, etc. Wi-Fi, wired and wireless connectivity are also supported.



Quad-core 2.0GHz A55 architecture



4G RAM + 64G ROM







# Innovative Design

The EF60 features a compact product design that is both versatile and flexible, Offering different modes of operation can enhance customer experience by providing options that suit different needs and preferences.

## Software and Services

To provide you with more professional and efficient support



# Install the Way You Need

The EF60 can adapt to different retail environments. Each mode can contribute to operational efficiency in different ways--countertop mode for staff-assisted checkouts, wall-mounted mode for self-serve or quick transactions and desktop mode for traditional checkouts.

Countertop Mode

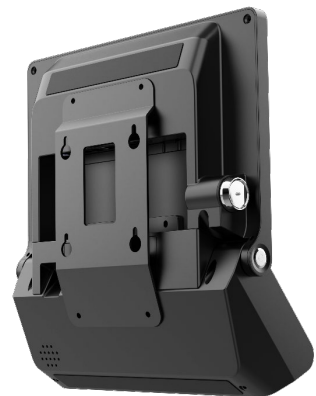
Installed on the wall

Desktop Mode



# Multiple Installation Options

Install EF60 in an easy way with a wall-mounted stand or a desktop multi-angle support to fit your businesses.



**75\*75  
VESA  
Installation**

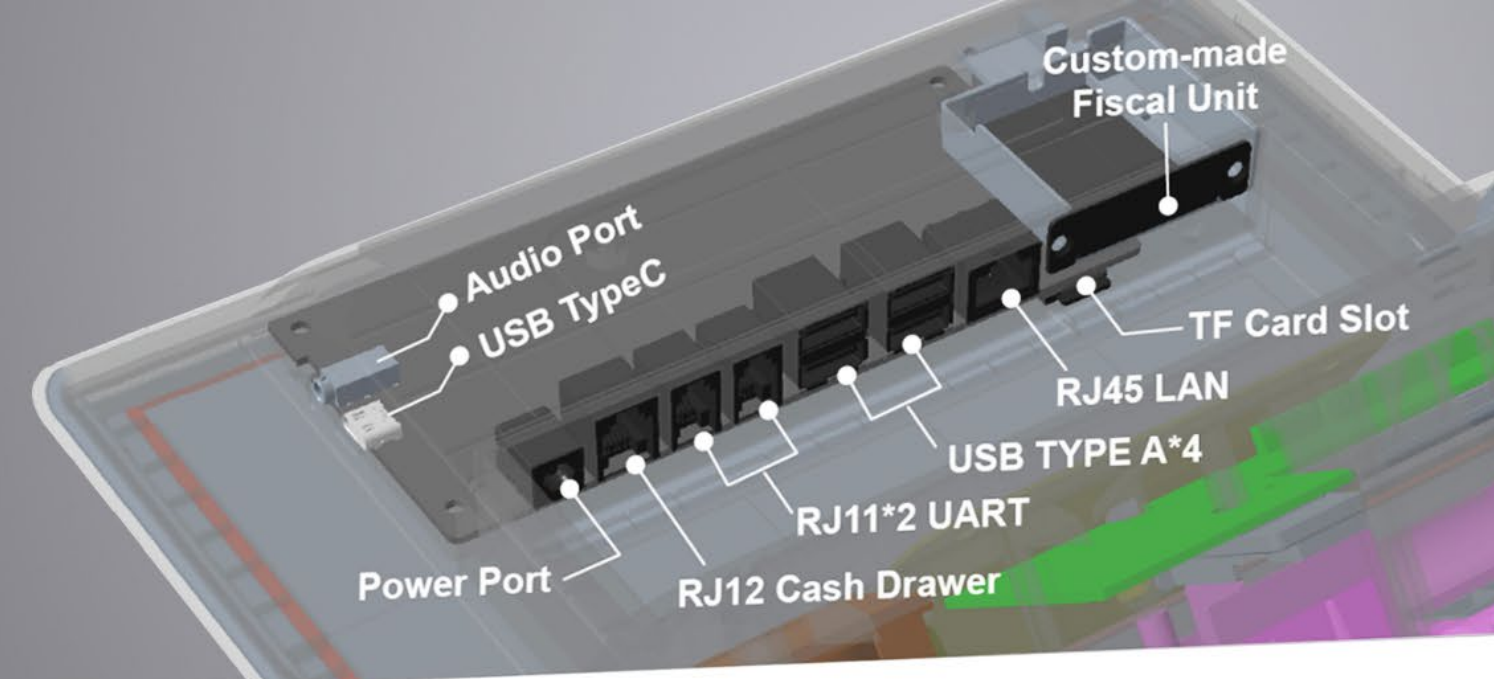


**Multi-angle  
Desktop Support**



## Ports for Expansion

EF60 extends its connection capabilities and enables to add optional modules to enhance flexibility.



## Pro 1D/2D Barcode Reader

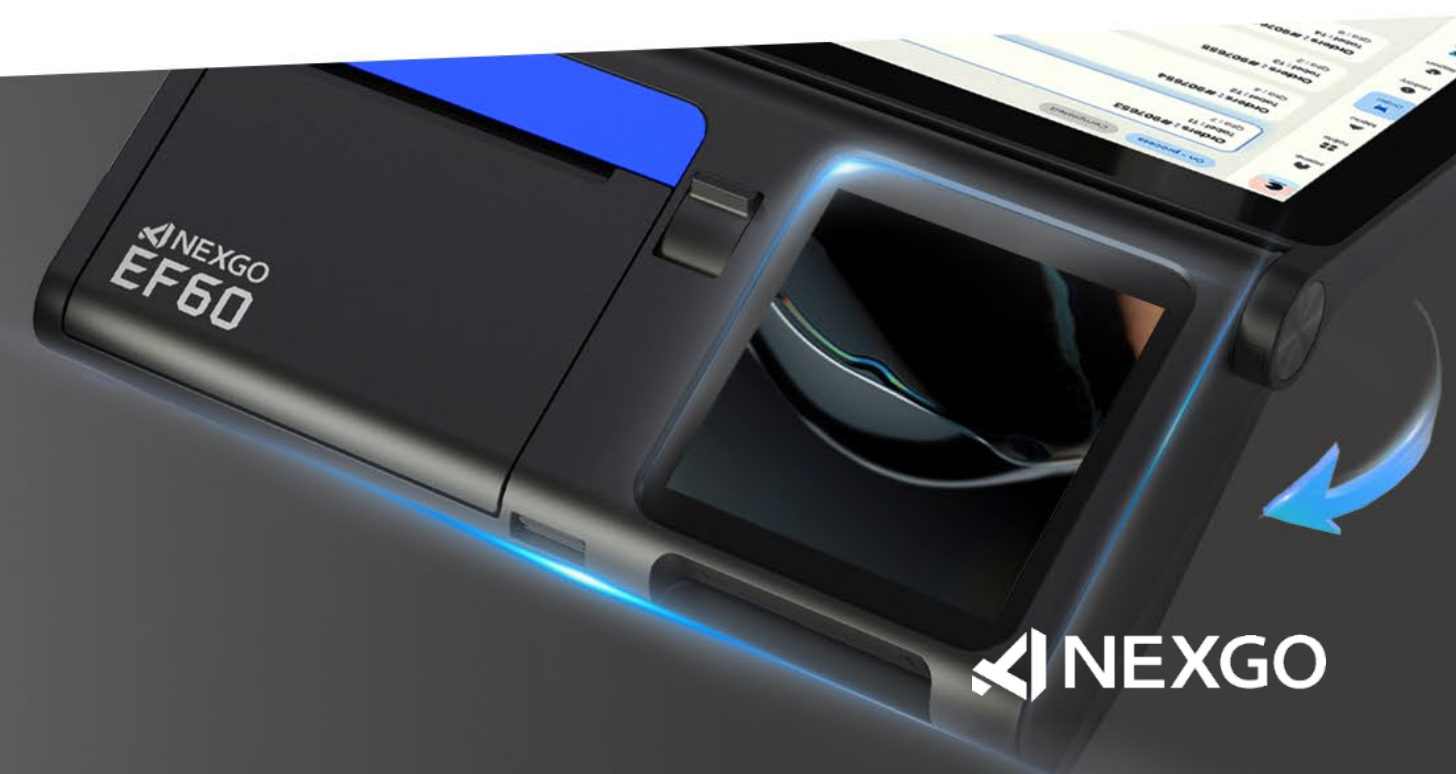
Ergonomic

Better card tapping and barcode reading experience

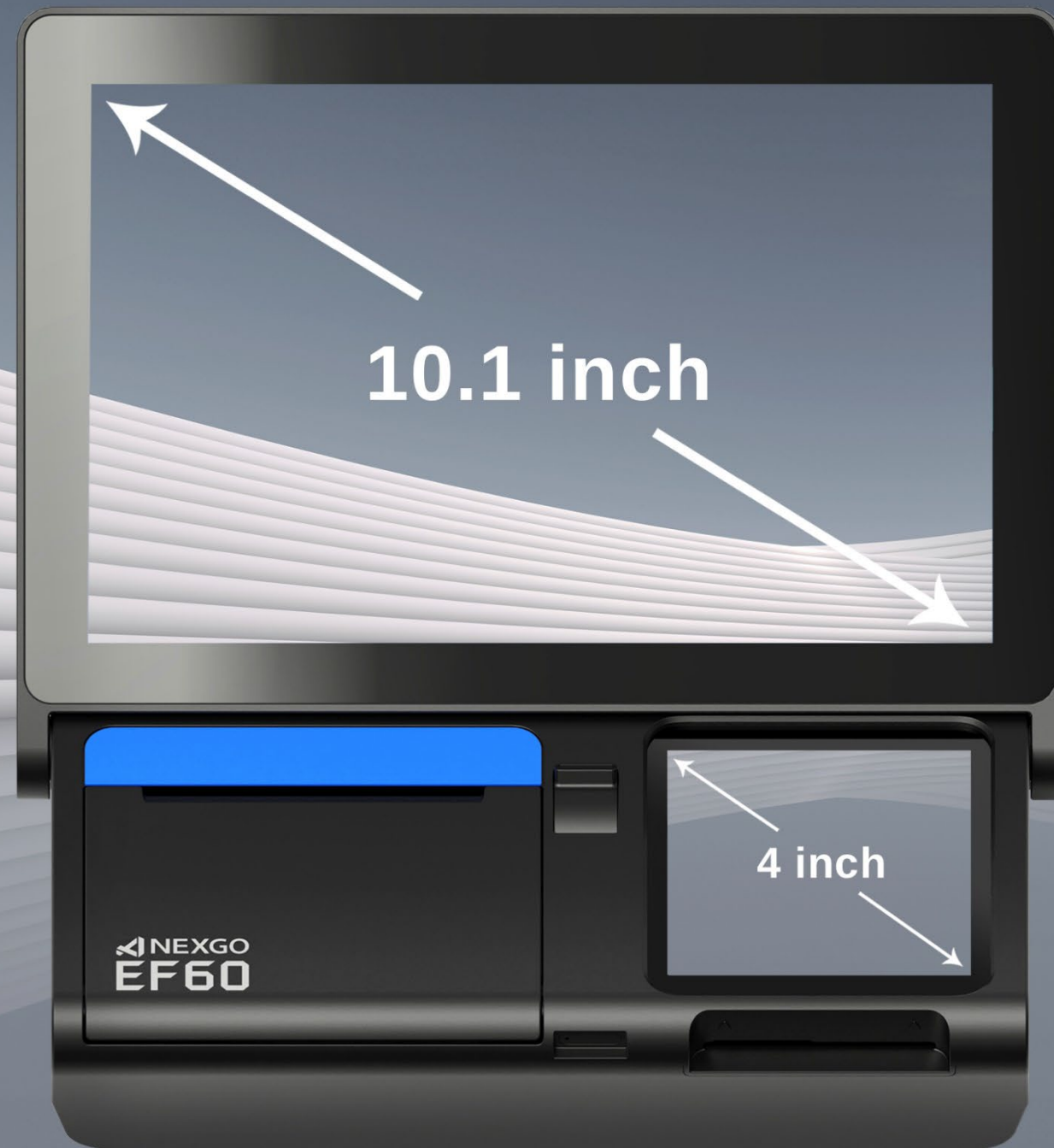
## Easy Assembly with Modular Blocks

Simple Maintenance

Versatile payment options: Chip & PIN, contactless, QR code, and mobile payment.







# 10.1+4 inch Dual Display

One for Your Merchant, One for the Customer.

10.1" IPS touch-screen with a wider viewing angle, EF60 transforms a more accurate color reproduction.



Optical Bonding



Lightness: 280 Nits



PIN-entry on Screen



# Internal High Speed Printer

Use the Dallas Key to allow multiple operators to navigate a system more easily.

Built-in 58/80mm high speed Thermal printer  
Auto-cutter



Equipped with auto-cutter



160 mm/s print speed



# Certifications





# EF60 Smart mini ECR

<b>OS</b> Android 11	<b>Printer</b> High Speed Thermal Printer, Paper Roll Width : 80/58mm, Diameter: 50mm Support Automatic Cutter	<b>Audio</b> 1 x Speaker 1 x Microphone	<b>Adaptor</b> DC 12V/7A
<b>Processor</b> Quad-core A55, 2.0GHz	<b>Card Readers</b> Chip Cards Contactless Cards	<b>Keys</b> 1 Power Key	<b>Physical</b> Countertop: 267mm(L) x 252mm(W) x 86mm(H) Self-stand: 277mm(L) x 78mm(W) x 252mm(H)
<b>Memory</b> 4GB RAM + 64GB ROM (Micro SD Card Supported, up to 128GB)	<b>Communication</b> Wi-Fi, 802.11a/b/g/n/ac, 2.4GHz&5GHz BT5.0	<b>PIN Pad</b> Software PIN Pad Blind PIN Supported	<b>Environmental</b> Operating Temperature : 0°C to 50°C Storage Temperature : -20°C to 70°C
<b>Display</b> Main: 10.1" (1280×800) Color Screen, Capacitive Touchscreen Customer Facing Display:4.0" (480*480)Color Screen Capacitive Touchscreen	<b>Card Slots</b> 1 x TF Card	<b>Ports</b> 4 x Type-A USB 1 x Type-C USB OTG 1 x RJ45, LAN 1 x RJ12, Cash Drawer 1 x DC, 1 x Audio Jack 3.5mm 2 x RS232	<b>Accessories</b> Scanning Module(Built-in) NFC Reader Dallas Key Custom-made Fiscal Unit Extension
	<b>Certifications</b> CE,FCC EMV3.0, L1&L2, Quickpass, Paypass, PayWave, JCB, AMEX, Discover, TQM; PCI6.X		



# THANK YOU!

NEXGOGLOBAL.COM

© 2025 NEXGO

